

# News Release



## The summer housing market remains active in Greater Vancouver

**VANCOUVER, B.C. – September 4, 2013** – August activity in the Greater Vancouver housing market finished well above last year’s pace and slightly below the 10-year average for the month.

The Real Estate Board of Greater Vancouver (REBGV) reports that residential property sales in Greater Vancouver reached 2,514 on the Multiple Listing Service® (MLS®) in August 2013. This represents a 52.5 per cent increase compared to the 1,649 sales recorded in August 2012, and a 14.7 per cent decline compared to the 2,946 sales in July 2013.

Last month’s sales were 4.6 per cent below the 10-year sales average for the month.

“We’ve seen a healthy amount of demand in the marketplace this summer compared to the number of homes listed for sale,” Sandra Wyant, REBGV president said. “The market today is much stronger than we saw last year and is consistent with our long-term averages for this time of year.”

New listings for detached, attached and apartment properties in Greater Vancouver totalled 4,186 in August. This represents a 3.5 per cent increase compared to the 4,044 new listings reported in August 2012 and a 13.8 per cent decline from the 4,854 new listings in July of this year.

The total number of properties currently listed for sale on the MLS® in Greater Vancouver is 16,027, which is an 8.8 per cent decrease compared to August 2012 and a 3.6 per cent decline from July 2013.

The sales-to-active-listings ratio currently sits at 15.7 per cent in Greater Vancouver. This ratio remains consistent with balanced market conditions.

“People entering the market should not confuse stronger sales activity with rising prices. Home prices have been quite stable and consistent for much of this year,” Wyant said.

The MLS® Home Price Index composite benchmark price for all residential properties in Greater Vancouver is currently \$601,500. This represents a 1.3 per cent decline compared to August 2012 and an increase of 2.3 per cent since the beginning of 2013.

Sales of detached properties reached 1,052 in August 2013, an increase of 69 per cent from the 624 detached sales recorded in August 2012, and a 3.1 per cent increase from the 1,020 units sold in August 2011. The benchmark price for detached properties decreased 2 per cent from August 2012 to \$923,700.

Sales of apartment properties reached 1,018 in August 2013, an increase of 40.4 per cent compared to the 725 sales in August 2012, and an increase of 6.6 per cent compared to the 955 sales in August 2011. The benchmark price of an apartment property decreased 1.1 per cent from August 2012 to \$366,100.

Attached property sales in August 2013 totalled 444, an increase of 48 per cent compared to the 300 sales in August 2012, and a 10.2 per cent increase from the 403 attached properties sold in August 2011. The benchmark price of an attached unit decreased 1.1 per cent between August 2012 and 2013 to \$457,000.

-30-

The real estate industry is a key economic driver in British Columbia. In 2012, 25,032 homes changed ownership in the Board's area generating \$1.07 billion in economic spin-off activity and creating an estimated 7,125 jobs. The total dollar value of residential sales transacted throughout the MLS® system in Greater Vancouver totalled \$18.6 billion in 2012. The Real Estate Board of Greater Vancouver is an association representing more than 11,000 REALTORS® and their companies. The Board provides a variety of member services, including the Multiple Listing Service®. For more information on real estate, statistics, and buying or selling a home, contact a local REALTOR® or visit [www.rebgv.org](http://www.rebgv.org).

For more information please contact:

**Craig Munn**

Assistant Manager, Communication  
Real Estate Board of Greater Vancouver  
604.730.3146  
[cmunn@rebgv.org](mailto:cmunn@rebgv.org)



Property Type	Area	Benchmark Price	Price Index	1 Month Change %	3 Month Change %	6 Month Change %	1 Year Change %	3 Year Change %	5 Year Change %
Residential / Composite	Lower Mainland	\$542,300	153.1	0.0%	0.5%	1.7%	-1.1%	5.3%	6.5%
	Greater Vancouver	\$601,500	157.7	-0.1%	0.5%	1.9%	-1.3%	5.8%	8.8%
	Bowen Island	\$557,200	120.8	-2.0%	0.3%	-4.3%	-6.5%	-10.0%	-12.4%
	Burnaby East	\$567,000	156.5	0.2%	0.8%	2.4%	1.0%	6.2%	9.4%
	Burnaby North	\$516,900	154.4	1.0%	1.2%	1.0%	0.9%	5.8%	7.3%
	Burnaby South	\$571,000	161.0	-0.1%	1.6%	3.1%	-0.2%	9.2%	12.0%
	Coquitlam	\$499,000	147.6	-0.4%	0.1%	1.0%	-1.3%	5.3%	4.0%
	Ladner	\$530,600	147.6	0.5%	0.1%	-0.8%	-3.3%	2.1%	6.6%
	Maple Ridge	\$388,100	131.2	0.6%	0.8%	0.9%	-0.5%	-0.5%	-5.9%
	New Westminster	\$368,800	158.3	0.7%	0.0%	2.3%	0.5%	6.4%	5.7%
	North Vancouver	\$649,600	147.0	0.3%	-0.1%	2.3%	-0.7%	5.7%	5.5%
	Pitt Meadows	\$386,000	139.8	0.8%	1.3%	0.7%	2.6%	1.6%	-1.4%
	Port Coquitlam	\$394,000	139.9	0.6%	0.9%	1.4%	-0.6%	0.2%	-3.5%
	Port Moody	\$514,900	142.2	1.2%	0.9%	2.8%	0.2%	3.4%	1.6%
	Richmond	\$572,700	166.3	0.1%	0.7%	2.3%	-0.8%	5.0%	13.4%
	Squamish	\$398,000	128.5	-0.2%	2.8%	1.4%	-2.1%	-1.6%	-7.4%
	Sunshine Coast	\$336,200	117.8	-1.3%	0.8%	-4.4%	-8.2%	-12.1%	-14.7%
	Tsawwassen	\$592,800	149.4	0.3%	1.1%	0.7%	-2.4%	3.5%	6.7%
	Vancouver East	\$608,400	178.0	-0.1%	0.1%	2.8%	-0.8%	12.4%	17.1%
	Vancouver West	\$800,500	168.7	-0.8%	0.5%	2.4%	-0.3%	8.3%	15.0%
West Vancouver	\$1,576,000	169.2	0.7%	0.5%	2.2%	-1.5%	23.2%	15.9%	
Whistler	\$453,300	108.0	-0.6%	5.0%	3.3%	-6.2%	-9.6%	-19.9%	
Single Family Detached	Lower Mainland	\$758,100	161.1	0.2%	0.6%	2.3%	-1.2%	10.5%	14.6%
	Greater Vancouver	\$923,700	170.7	0.4%	0.7%	2.5%	-2.0%	12.4%	19.1%
	Bowen Island	\$557,200	120.8	-2.0%	0.3%	-4.3%	-6.5%	-10.0%	-12.4%
	Burnaby East	\$753,100	168.4	-0.1%	-0.1%	3.1%	-0.2%	14.4%	21.3%
	Burnaby North	\$931,100	179.7	1.7%	2.7%	2.3%	1.9%	16.0%	26.4%
	Burnaby South	\$970,800	186.1	0.2%	0.9%	5.6%	-3.5%	22.5%	31.3%
	Coquitlam	\$710,000	157.3	0.1%	0.6%	1.7%	-0.7%	10.5%	12.9%
	Ladner	\$615,000	148.4	0.1%	0.8%	-1.7%	-3.5%	3.0%	9.0%
	Maple Ridge	\$463,400	131.7	0.6%	0.2%	1.7%	0.1%	1.1%	-2.9%
	New Westminster	\$667,500	165.6	0.0%	0.1%	2.4%	-0.8%	11.4%	19.3%
	North Vancouver	\$953,000	152.1	1.1%	0.2%	3.1%	-0.3%	9.7%	10.8%
	Pitt Meadows	\$508,500	141.9	0.6%	1.6%	2.0%	2.5%	1.6%	5.0%
	Port Coquitlam	\$552,200	147.5	0.3%	0.9%	1.2%	-1.3%	5.0%	5.4%
	Port Moody	\$843,000	156.2	1.2%	1.5%	4.3%	-0.6%	10.4%	10.6%
	Richmond	\$945,100	190.3	0.1%	0.8%	1.9%	-3.1%	11.1%	27.2%
	Squamish	\$499,400	134.9	1.5%	4.2%	-0.1%	-0.7%	5.9%	-2.0%
	Sunshine Coast	\$334,800	117.3	-1.2%	0.7%	-4.5%	-8.2%	-12.5%	-15.1%
	Tsawwassen	\$713,400	153.6	-0.3%	1.4%	1.1%	-2.1%	7.0%	10.7%
	Vancouver East	\$849,100	187.5	0.5%	1.4%	4.5%	-1.2%	20.3%	29.7%
	Vancouver West	\$2,079,900	213.7	0.5%	0.6%	3.9%	-1.7%	17.7%	36.2%
West Vancouver	\$1,862,100	177.3	0.0%	0.2%	2.7%	-1.7%	28.2%	20.6%	
Whistler	\$900,900	124.7	1.5%	3.7%	0.4%	7.0%	5.3%	-9.7%	

**HOW TO READ THE TABLE:**

- Benchmark Price: Estimated sale price of a benchmark property. Benchmarks represent a typical property within each market.
- Price Index: Index numbers estimate the percentage change in price on typical and constant quality properties over time. All figures are based on past sales.
- x Month/Year Change %: Percentage change of index over a period of x month(s)/year(s)  
In January 2005, the indexes are set to 100.  
Townhome properties are similar to Attached properties, a category that was used in the previous MLSLink HPI, but do not include duplexes.  
The above info is deemed reliable, but is not guaranteed. All dollar amounts in CDN.



Property Type	Area	Benchmark Price	Price Index	1 Month Change %	3 Month Change %	6 Month Change %	1 Year Change %	3 Year Change %	5 Year Change %
Townhouse	Lower Mainland	\$390,400	141.7	0.1%	0.3%	0.4%	-1.4%	0.1%	0.1%
	Greater Vancouver	\$457,000	148.3	0.1%	0.5%	0.3%	-1.1%	1.5%	3.8%
	Burnaby East	\$416,300	149.3	-0.1%	1.9%	2.5%	-0.9%	3.7%	4.3%
	Burnaby North	\$390,700	145.7	1.0%	-1.2%	-1.6%	-1.6%	-2.9%	1.5%
	Burnaby South	\$408,000	146.4	0.7%	1.0%	-1.0%	-2.0%	0.8%	4.8%
	Coquitlam	\$383,000	140.7	0.6%	0.2%	-0.4%	0.1%	1.7%	0.9%
	Ladner	\$438,800	145.4	-0.1%	-3.5%	0.9%	-2.4%	2.9%	2.8%
	Maple Ridge	\$273,200	132.7	0.3%	2.1%	0.0%	-0.3%	-3.2%	-7.2%
	New Westminster	\$389,700	146.4	-0.6%	-1.0%	2.1%	0.1%	3.1%	3.6%
	North Vancouver	\$585,300	140.1	0.7%	0.8%	-0.1%	-0.8%	-0.6%	1.6%
	Pitt Meadows	\$313,200	135.5	0.1%	-1.7%	-2.4%	-2.6%	-2.0%	-5.6%
	Port Coquitlam	\$364,900	138.9	-0.6%	0.6%	-0.1%	0.1%	-1.1%	-2.8%
	Port Moody	\$406,300	137.3	1.0%	1.1%	-1.3%	-0.4%	-0.6%	-3.8%
	Richmond	\$496,200	160.4	0.1%	0.8%	1.5%	-1.2%	3.6%	11.5%
	Squamish	\$337,000	122.3	-0.1%	4.2%	2.2%	-5.0%	-3.2%	-11.0%
	Tsawwassen	\$448,300	138.6	-0.3%	-3.7%	1.0%	-2.3%	-2.6%	-2.0%
	Vancouver East	\$516,600	170.3	-0.2%	-0.3%	0.9%	0.8%	8.0%	9.7%
Vancouver West	\$696,300	157.5	-1.4%	0.0%	-0.6%	1.1%	6.1%	10.8%	
Whistler	\$455,900	122.8	0.7%	6.2%	5.6%	-1.1%	8.4%	-8.0%	
Apartment	Lower Mainland	\$336,000	147.4	-0.3%	0.2%	1.4%	-1.1%	0.5%	-1.1%
	Greater Vancouver	\$366,100	148.0	-0.6%	0.1%	1.6%	-1.1%	0.4%	0.5%
	Burnaby East	\$379,100	143.9	2.3%	1.2%	2.6%	11.0%	-6.6%	-7.9%
	Burnaby North	\$333,100	140.8	0.5%	0.8%	0.5%	0.9%	1.1%	-3.2%
	Burnaby South	\$377,300	151.5	-0.6%	1.6%	2.6%	2.7%	3.7%	3.6%
	Coquitlam	\$244,500	134.6	-1.7%	-0.9%	0.1%	-3.4%	-2.5%	-8.6%
	Ladner	\$310,300	147.1	2.9%	1.4%	0.8%	-3.5%	-1.5%	2.9%
	Maple Ridge	\$174,500	127.2	1.0%	2.0%	-1.6%	-3.9%	-3.6%	-16.0%
	New Westminster	\$275,000	157.2	1.2%	0.1%	2.3%	1.2%	4.9%	1.8%
	North Vancouver	\$349,500	141.9	-1.1%	-0.8%	1.8%	-1.7%	2.5%	-0.1%
	Pitt Meadows	\$237,100	140.1	1.4%	2.9%	1.2%	7.2%	5.3%	-7.5%
	Port Coquitlam	\$219,100	129.9	2.0%	0.9%	2.6%	-0.4%	-5.7%	-15.0%
	Port Moody	\$323,700	134.9	1.0%	-0.2%	4.3%	0.7%	0.5%	-1.0%
	Richmond	\$347,400	147.3	0.1%	0.4%	3.5%	2.1%	-1.5%	0.9%
	Squamish	\$247,800	119.2	-5.8%	-1.2%	5.7%	-3.4%	-16.0%	-15.8%
	Tsawwassen	\$328,300	138.1	2.6%	1.0%	-0.8%	-4.0%	-6.4%	-3.4%
	Vancouver East	\$304,000	167.7	-0.8%	-1.5%	0.8%	-1.1%	2.9%	3.9%
Vancouver West	\$469,300	151.9	-1.4%	0.4%	1.6%	-0.3%	2.9%	5.5%	
West Vancouver	\$617,400	134.9	4.5%	1.7%	-0.7%	0.7%	1.6%	-4.7%	
Whistler	\$212,200	76.2	-5.2%	1.2%	4.2%	-14.2%	-38.3%	-43.1%	

**HOW TO READ THE TABLE:**

- Benchmark Price: Estimated sale price of a benchmark property. Benchmarks represent a typical property within each market.
- Price Index: Index numbers estimate the percentage change in price on typical and constant quality properties over time. All figures are based on past sales.
- x Month/Year Change %: Percentage change of index over a period of x month(s)/year(s)

In January 2005, the indexes are set to 100.

Townhome properties are similar to attached properties, a category that was used in the previous MLSLink HPI, but do not include duplexes.

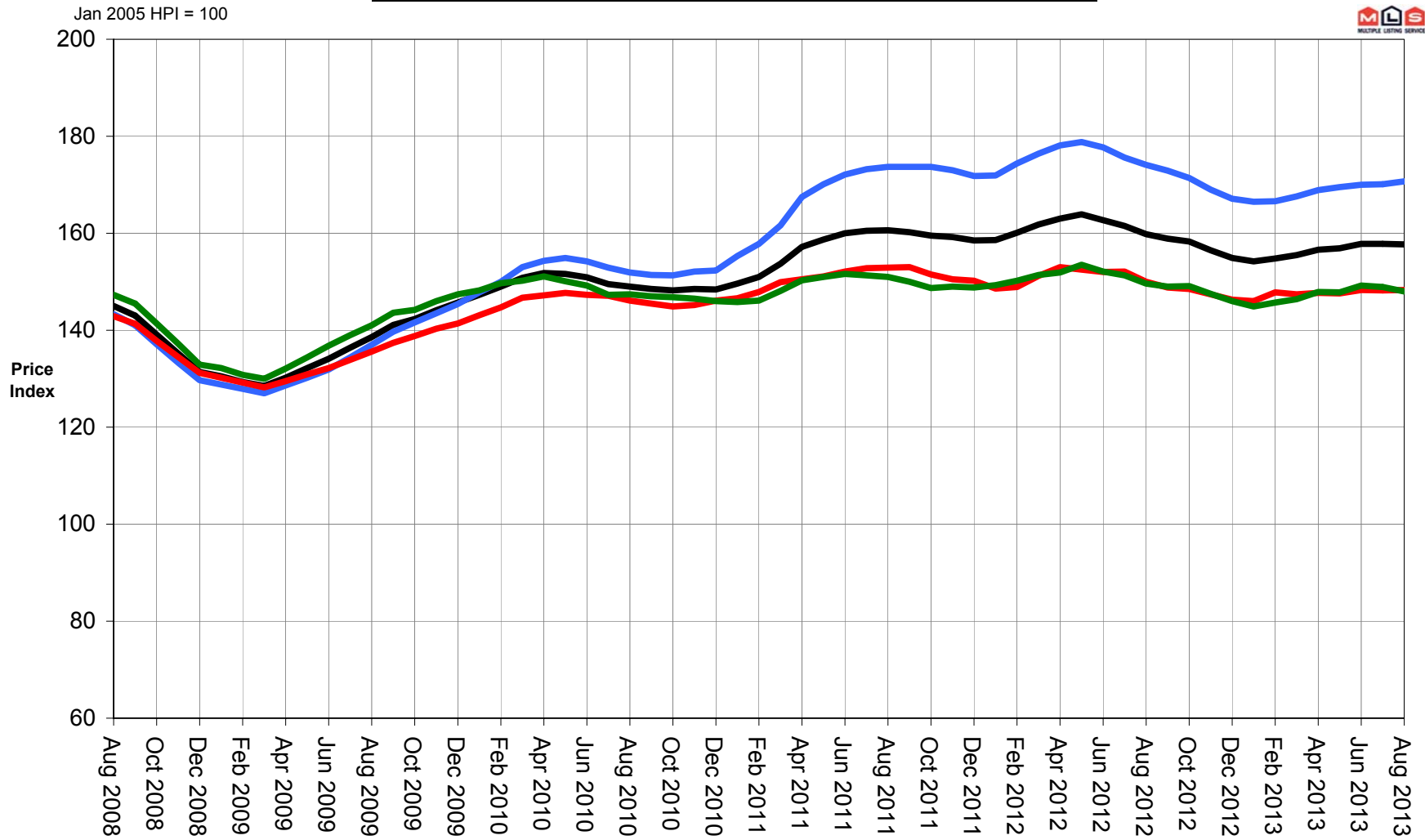
Lower Mainland includes areas serviced by both Real Estate Board of Greater Vancouver & Fraser Valley Real Estate Board.

The above info is deemed reliable, but is not guaranteed. All dollar amounts in CDN.



## Greater Vancouver 5 Year Trend

Residential Detached Townhouse Apartment



# MLS® SALES Facts



## August 2013

		Burnaby	Coquitlam	Delta - South	Islands - Gulf	Maple Ridge/Pitt Meadows	New Westminster	North Vancouver	Port Coquitlam	Port Moody/Belcarra	Richmond	Squamish	Sunshine Coast	Vancouver East	Vancouver West	West Vancouver/Howe Sound	Whistler/Pemberton	TOTALS		
August 2013	Number of Sales	Detached	104	99	41	1	97	23	76	38	24	136	11	42	142	133	75	10	1,052	
		Attached	55	35	11	0	24	9	38	32	22	94	6	4	42	47	9	16	444	
		Apartment	172	59	14	0	25	69	64	23	15	109	3	3	94	335	12	21	1,018	
	Median Selling Price	Detached	\$899,000	\$729,000	\$696,000	n/a	\$483,000	\$680,500	\$1,021,000	\$549,250	\$1,004,000	\$960,000	n/a	\$422,500	\$905,000	\$2,160,800	\$1,819,000	n/a	n/a	
		Attached	\$497,000	\$430,000	n/a	n/a	\$277,000	n/a	\$644,750	\$356,850	\$399,950	\$520,000	n/a	n/a	\$589,500	\$790,000	n/a	n/a	n/a	
		Apartment	\$390,000	\$291,000	n/a	n/a	\$187,700	\$265,000	\$369,000	\$239,525	n/a	\$343,000	n/a	n/a	\$322,900	\$482,500	n/a	\$160,050		
July 2013	Number of Sales	Detached	122	119	47	3	126	34	117	54	28	146	14	56	148	130	79	26	1,249	
		Attached	73	46	6	0	39	11	27	23	11	94	8	4	53	58	15	19	487	
		Apartment	166	68	13	0	31	76	77	34	30	165	6	5	124	384	16	15	1,210	
	Median Selling Price	Detached	\$920,000	\$671,250	\$664,000	n/a	\$513,551	\$685,750	\$948,475	\$537,450	\$814,750	\$935,500	n/a	\$385,931	\$880,000	\$2,305,000	\$1,948,000	\$872,500		
		Attached	\$479,900	\$455,029	n/a	n/a	\$295,000	n/a	\$588,000	\$403,500	n/a	\$492,827	n/a	n/a	\$616,822	\$811,500	n/a	n/a	n/a	
		Apartment	\$375,000	\$307,250	n/a	n/a	\$220,000	\$304,000	\$381,250	\$217,500	\$331,000	\$320,500	n/a	n/a	\$328,000	\$488,500	n/a	n/a		
August 2012	Number of Sales	Detached	42	58	38	2	71	17	51	27	12	60	11	47	79	75	24	10	624	
		Attached	45	23	5	0	30	9	14	17	17	54	8	3	15	40	4	16	300	
		Apartment	87	41	11	0	27	58	48	18	21	65	3	4	75	247	6	14	725	
	Median Selling Price	Detached	\$934,500	\$719,000	\$689,500	n/a	\$456,000	n/a	\$1,060,000	\$568,500	n/a	\$937,500	n/a	\$410,000	\$867,500	\$2,030,000	\$1,958,000	n/a	n/a	
		Attached	\$435,000	\$455,000	n/a	n/a	\$277,500	n/a	n/a	n/a	n/a	\$533,750	n/a	n/a	n/a	\$916,250	n/a	n/a	n/a	
		Apartment	\$360,900	\$279,000	n/a	n/a	\$233,600	\$308,250	\$360,000	n/a	\$342,000	\$341,000	n/a	n/a	\$310,000	\$495,500	n/a	n/a		
Jan. - Aug. 2013 Year-to-date	Number of Sales	Detached	651	772	318	19	763	194	771	270	172	874	112	324	949	1,077	489	103	7,858	
		Attached	528	310	46	0	246	88	244	210	121	625	80	28	299	424	60	137	3,446	
		Apartment	1,123	487	88	0	185	505	498	177	169	942	31	33	738	2,593	107	126	7,802	
	Median Selling Price	Detached	\$910,000	\$707,250	\$663,500	n/a	\$480,000	\$688,200	\$952,000	\$541,500	\$792,500	\$927,000	\$497,500	\$385,000	\$870,000	\$2,130,000	\$1,850,000	\$916,000		
		Attached	\$480,000	\$437,750	\$407,500	n/a	\$300,000	\$443,000	\$625,000	\$369,400	\$425,500	\$501,000	\$362,887	\$248,700	\$615,000	\$840,500	\$1,200,000	\$500,000	n/a	
		Apartment	\$365,000	\$289,400	\$326,500	n/a	\$205,000	\$285,000	\$373,500	\$229,750	\$336,000	\$338,400	\$215,000	\$294,500	\$340,500	\$475,000	\$797,500	\$244,500		
Jan. - Aug. 2012 Year-to-date	Number of Sales	Detached	637	821	332	26	792	209	706	293	146	723	134	352	955	927	454	74	7,581	
		Attached	509	299	54	1	293	93	220	168	151	535	68	31	270	382	56	154	3,284	
		Apartment	1,034	500	86	0	209	572	569	220	171	808	31	36	885	2,544	119	108	7,892	
	Median Selling Price	Detached	\$927,000	\$740,000	\$686,500	\$391,000	\$480,000	\$672,000	\$1,015,500	\$545,000	\$780,000	\$980,000	\$500,000	\$399,500	\$876,500	\$2,075,500	\$1,867,500	\$973,800		
		Attached	\$472,000	\$464,900	\$433,277	n/a	\$292,000	\$425,000	\$650,000	\$390,000	\$447,500	\$528,500	\$350,000	\$286,500	\$626,000	\$867,839	\$1,154,400	\$572,500	n/a	
		Apartment	\$366,570	\$285,000	\$336,000	n/a	\$216,000	\$308,875	\$375,000	\$240,750	\$334,000	\$340,500	\$258,000	\$238,000	\$348,700	\$480,000	\$700,000	\$229,000		

Note: Median Selling Prices are not reported for areas with less than 20 sales or for the Gulf Islands



# MLS® LISTINGS Facts



**August  
2013**

		<i>Burnaby</i>	<i>Coquitlam</i>	<i>Delta - South</i>	<i>Islands - Gulf</i>	<i>Maple Ridge/Pitt Meadows</i>	<i>New Westminster</i>	<i>North Vancouver</i>	<i>Port Coquitlam</i>	<i>Port Moody/Belcarra</i>	<i>Richmond</i>	<i>Squamish</i>	<i>Sunshine Coast</i>	<i>Vancouver East</i>	<i>Vancouver West</i>	<i>West Vancouver/Howe Sound</i>	<i>Whistler/Pemberton</i>	<b>TOTALS</b>		
<b>August 2013</b>	<b>Number of Listings</b>	Detached	198	177	57	11	197	45	100	50	25	226	27	95	209	229	119	27	1,792	
		Attached	106	53	16	0	72	9	38	30	32	142	14	8	43	73	14	26	676	
		Apartment	226	104	27	0	57	111	126	58	36	201	8	11	141	556	29	27	1,718	
	<b>% Sales to Listings</b>	Detached	53%	56%	72%	9%	49%	51%	76%	76%	96%	60%	41%	44%	68%	58%	63%	37%		
		Attached	52%	66%	69%	n/a	33%	100%	100%	107%	69%	66%	43%	50%	98%	64%	64%	62%		n/a
		Apartment	76%	57%	52%	n/a	44%	62%	51%	40%	42%	54%	38%	27%	67%	60%	41%	78%		
<b>July 2013</b>	<b>Number of Listings</b>	Detached	218	165	80	21	196	50	137	56	38	285	37	99	236	289	137	31	2,075	
		Attached	106	69	13	0	76	15	44	42	19	162	9	8	83	111	16	31	804	
		Apartment	302	138	21	0	38	133	142	53	31	265	7	6	167	598	38	36	1,975	
	<b>% Sales to Listings</b>	Detached	56%	72%	59%	14%	64%	68%	85%	96%	74%	51%	38%	57%	63%	45%	58%	84%		
		Attached	69%	67%	46%	n/a	51%	73%	61%	55%	58%	58%	89%	50%	64%	52%	94%	61%		n/a
		Apartment	55%	49%	62%	n/a	82%	57%	54%	64%	97%	62%	86%	83%	74%	64%	42%	42%		
<b>August 2012</b>	<b>Number of Listings</b>	Detached	155	145	62	11	179	30	119	58	35	234	32	97	200	221	109	37	1,724	
		Attached	87	57	9	1	76	16	33	21	29	133	16	18	45	86	10	37	674	
		Apartment	261	113	21	0	45	111	99	30	29	206	11	9	144	517	23	27	1,646	
	<b>% Sales to Listings</b>	Detached	27%	40%	61%	18%	40%	57%	43%	47%	34%	26%	34%	48%	40%	34%	22%	27%		
		Attached	52%	40%	56%	0%	39%	56%	42%	81%	59%	41%	50%	17%	33%	47%	40%	43%		n/a
		Apartment	33%	36%	52%	n/a	60%	52%	48%	60%	72%	32%	27%	44%	52%	48%	26%	52%		
<b>Jan. - Aug. 2013</b> <i>Year-to-date*</i>	<b>Number of Listings</b>	Detached	1,618	1,506	621	112	1,627	380	1,418	480	361	2,185	312	918	1,854	2,354	1,310	243	17,299	
		Attached	960	623	108	1	555	144	438	367	248	1,136	156	90	566	846	126	221	6,585	
		Apartment	2,258	1,120	206	0	464	1,045	1,198	442	362	1,959	107	71	1,488	5,138	255	249	16,362	
	<b>% Sales to Listings</b>	Detached	40%	51%	51%	17%	47%	51%	54%	56%	48%	40%	36%	35%	51%	46%	37%	42%		
		Attached	55%	50%	43%	0%	44%	61%	56%	57%	49%	55%	51%	31%	53%	50%	48%	62%		n/a
		Apartment	50%	43%	43%	n/a	40%	48%	42%	40%	47%	48%	29%	46%	50%	50%	42%	51%		
<b>Jan. - Aug. 2012</b> <i>Year-to-date*</i>	<b>Number of Listings</b>	Detached	1,665	1,596	626	113	1,757	364	1,406	562	354	2,655	360	991	2,098	2,793	1,263	259	18,862	
		Attached	1,079	583	86	2	569	185	458	279	293	1,266	177	87	541	981	122	296	7,004	
		Apartment	2,600	1,193	198	0	483	1,237	1,315	466	401	2,229	154	98	1,718	6,081	283	275	18,731	
	<b>% Sales to Listings</b>	Detached	38%	51%	53%	23%	45%	57%	50%	52%	41%	27%	37%	36%	46%	33%	36%	29%		
		Attached	47%	51%	63%	50%	51%	50%	48%	60%	52%	42%	38%	36%	50%	39%	46%	52%		n/a
		Apartment	40%	42%	43%	n/a	43%	46%	43%	47%	43%	36%	20%	37%	52%	42%	42%	39%		

\* Year-to-date listings represent a cumulative total of listings rather than total active listings.

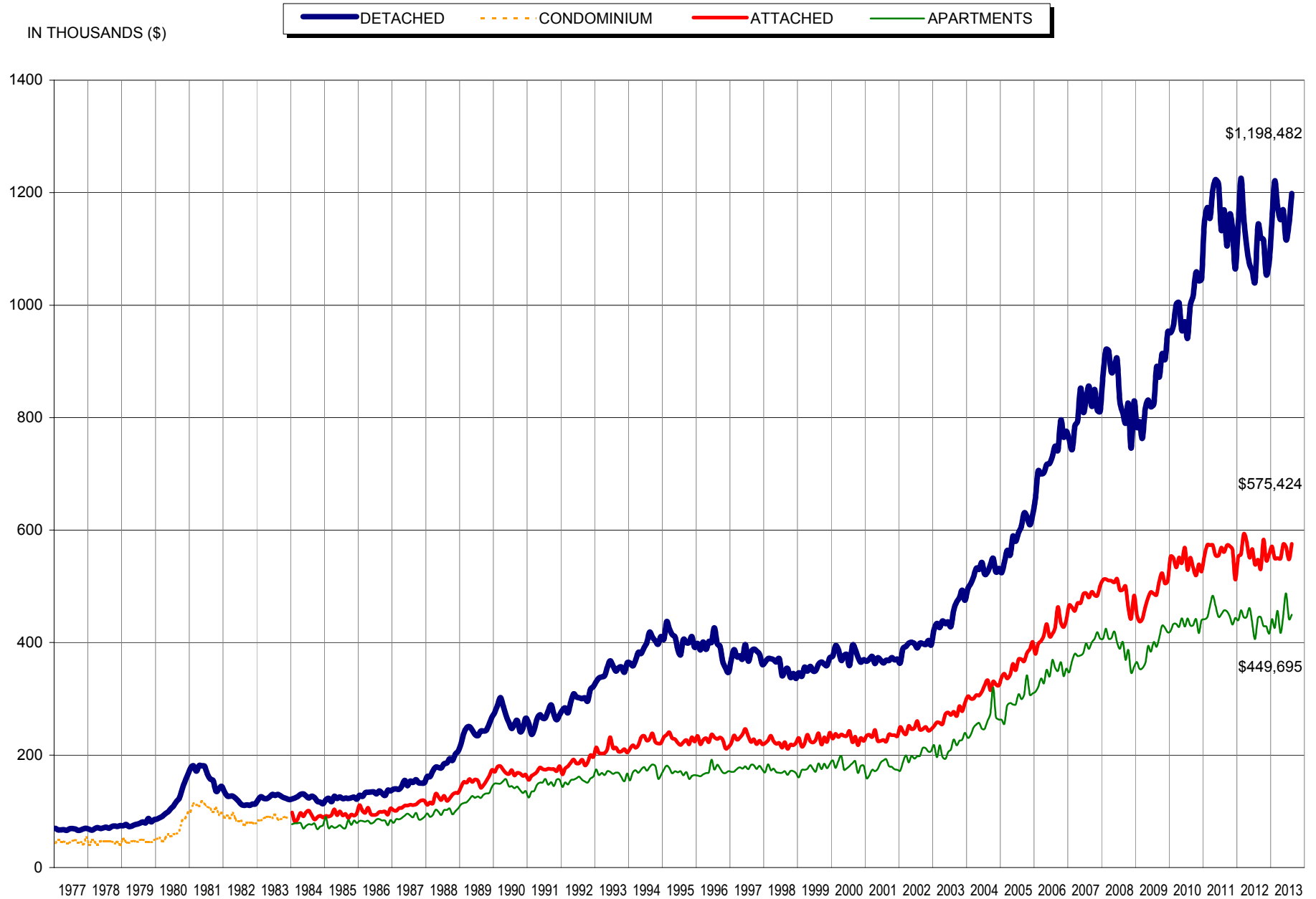


# Listing & Sales Activity Summary

	<u>Listings</u>				<u>Sales</u>						
	1 Aug 2012	2 Jul 2013	3 Aug 2013	Col. 2 & 3 Percentage Variance	5 Aug 2012	6 Jul 2013	7 Aug 2013	Col. 6 & 7 Percentage Variance	9 Jun 2012 - Aug 2012	10 Jun 2013 - Aug 2013	Col. 9 & 10 Percentage Variance
<b>BURNABY</b>				<b>%</b>				<b>%</b>			<b>%</b>
DETACHED	155	218	198	-9.2	42	122	104	-14.8	183	305	66.7
ATTACHED	87	106	106	0.0	45	73	55	-24.7	188	211	12.2
APARTMENTS	261	302	226	-25.2	87	166	172	3.6	350	487	39.1
<b>COQUITLAM</b>											
DETACHED	145	165	177	7.3	58	119	99	-16.8	226	322	42.5
ATTACHED	57	69	53	-23.2	23	46	35	-23.9	96	134	39.6
APARTMENTS	113	138	104	-24.6	41	68	59	-13.2	146	194	32.9
<b>DELTA</b>											
DETACHED	62	80	57	-28.8	38	47	41	-12.8	110	152	38.2
ATTACHED	9	13	16	23.1	5	6	11	83.3	20	19	-5.0
APARTMENTS	21	21	27	28.6	11	13	14	7.7	34	46	35.3
<b>MAPLE RIDGE/PITT MEADOWS</b>											
DETACHED	179	196	197	0.5	71	126	97	-23.0	287	327	13.9
ATTACHED	76	76	72	-5.3	30	39	24	-38.5	109	101	-7.3
APARTMENTS	45	38	57	50.0	27	31	25	-19.4	86	79	-8.1
<b>NORTH VANCOUVER</b>											
DETACHED	119	137	100	-27.0	51	117	76	-35.0	184	292	58.7
ATTACHED	33	44	38	-13.6	14	27	38	40.7	61	105	72.1
APARTMENTS	99	142	126	-11.3	48	77	64	-16.9	172	208	20.9
<b>NEW WESTMINSTER</b>											
DETACHED	30	50	45	-10.0	17	34	23	-32.4	77	86	11.7
ATTACHED	16	15	9	-40.0	9	11	9	-18.2	32	29	-9.4
APARTMENTS	111	133	111	-16.5	58	76	69	-9.2	217	206	-5.1
<b>PORT MOODY/BELCARRA</b>											
DETACHED	35	38	25	-34.2	12	28	24	-14.3	38	81	113.2
ATTACHED	29	19	32	68.4	17	11	22	100.0	43	46	7.0
APARTMENTS	29	31	36	16.1	21	30	15	-50.0	56	68	21.4
<b>PORT COQUITLAM</b>											
DETACHED	58	56	50	-10.7	27	54	38	-29.6	104	132	26.9
ATTACHED	21	42	30	-28.6	17	23	32	39.1	64	84	31.3
APARTMENTS	30	53	58	9.4	18	34	23	-32.4	63	80	27.0
<b>RICHMOND</b>											
DETACHED	234	285	226	-20.7	60	146	136	-6.8	196	397	102.6
ATTACHED	133	162	142	-12.3	54	94	94	0.0	168	260	54.8
APARTMENTS	206	265	201	-24.2	65	165	109	-33.9	279	395	41.6
<b>SUNSHINE COAST</b>											
DETACHED	97	99	95	-4.0	47	56	42	-25.0	155	147	-5.2
ATTACHED	18	8	8	0.0	3	4	4	0.0	11	11	0.0
APARTMENTS	9	6	11	83.3	4	5	3	-40.0	15	13	-13.3
<b>SQUAMISH</b>											
DETACHED	32	37	27	-27.0	11	14	11	-21.4	60	40	-33.3
ATTACHED	16	9	14	55.6	8	8	6	-25.0	25	22	-12.0
APARTMENTS	11	7	8	14.3	3	6	3	-50.0	11	15	36.4
<b>VANCOUVER EAST</b>											
DETACHED	200	236	209	-11.4	79	148	142	-4.1	295	431	46.1
ATTACHED	45	83	43	-48.2	15	53	42	-20.8	74	133	79.7
APARTMENTS	144	167	141	-15.6	75	124	94	-24.2	315	317	0.6
<b>VANCOUVER WEST</b>											
DETACHED	221	289	229	-20.8	75	130	133	2.3	260	408	56.9
ATTACHED	86	111	73	-34.2	40	58	47	-19.0	132	168	27.3
APARTMENTS	517	598	556	-7.0	247	384	335	-12.8	854	1105	29.4
<b>WHISTLER/PEMBERTON</b>											
DETACHED	37	31	27	-12.9	10	26	10	-61.5	29	48	65.5
ATTACHED	37	31	26	-16.1	16	19	16	-15.8	64	48	-25.0
APARTMENTS	27	36	27	-25.0	14	15	21	40.0	44	44	0.0
<b>WEST VANCOUVER/HOWE SOUND</b>											
DETACHED	109	137	119	-13.1	24	79	75	-5.1	117	230	96.6
ATTACHED	10	16	14	-12.5	4	15	9	-40.0	12	32	166.7
APARTMENTS	23	38	29	-23.7	6	16	12	-25.0	36	39	8.3
<b>GRAND TOTALS</b>											
DETACHED	<b>1713</b>	<b>2054</b>	<b>1781</b>	<b>-13.3</b>	<b>622</b>	<b>1246</b>	<b>1051</b>	<b>-15.7</b>	<b>2321</b>	<b>3398</b>	<b>46.4</b>
ATTACHED	<b>673</b>	<b>804</b>	<b>676</b>	<b>-15.9</b>	<b>300</b>	<b>487</b>	<b>444</b>	<b>-8.8</b>	<b>1099</b>	<b>1403</b>	<b>27.7</b>
APARTMENTS	<b>1646</b>	<b>1975</b>	<b>1718</b>	<b>-13.0</b>	<b>725</b>	<b>1210</b>	<b>1018</b>	<b>-15.9</b>	<b>2678</b>	<b>3296</b>	<b>23.1</b>



## Residential Average Sale Prices - January 1977 to August 2013



NOTE: From 1977 - 1984 condominium averages were not separated into attached & apartment.